

SMART REVERSE OSMOSIS SYSTEM

Direct Flow

6 Filtration Stages

- 800 GPD production (2.280 l.)
- Compact design
- Double information system on the tap and machine





Kinetico[®]
Export



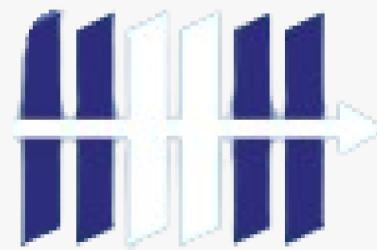
**1,6 LPM HIGH
PRODUCTION**



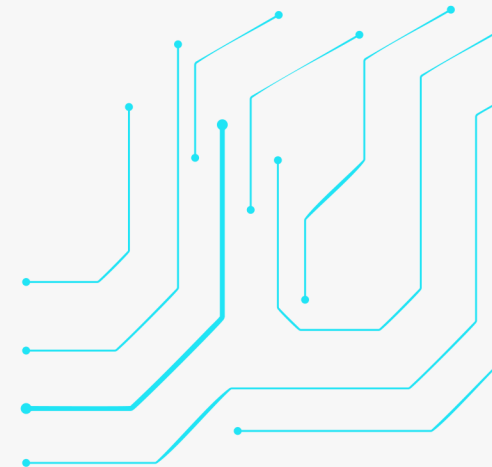
**FILTER CHANGE
WARNING**



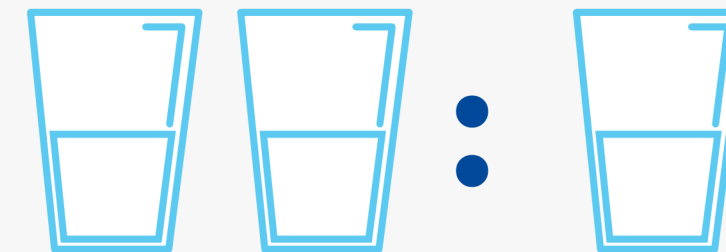
**MEMBRANE
CHANGE WARNING**



**6 FILTRATION
STAGES**



**HYDRAULIC
CIRCUIT**



**PRODUCTION RATE 2:1
LITRES OF PERMEATED
AND WASTE WATER**



**FILTER CHANGE IN 3
SECONDS**



**QUALITY
SENSOR**



**LEAKAGE
SENSOR**



MULTIPROTECTION *



**SMART FAUCET
WITH CONTROL
WARNING**



**AUTO-FLUSHING
MEMBRANE**

** It stops after 30 minutes of working
constantly.*

It stops if something wrong is detected in the pump.

20 Minutes

It stops when the temperature goes below 3 ° C.

800 GPD

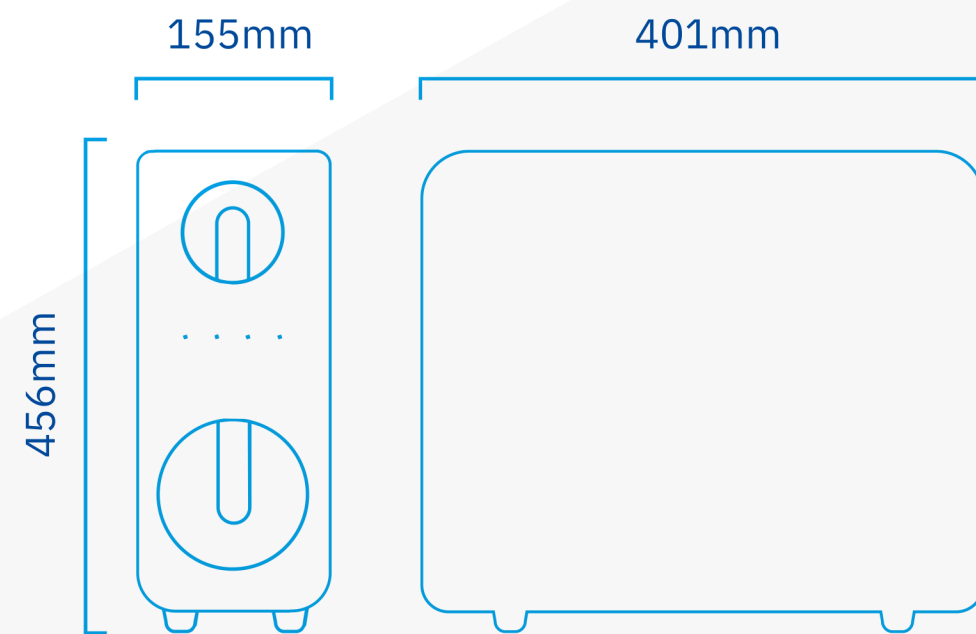
CAPACITY

Fill your glass of water

in only **4 seconds**

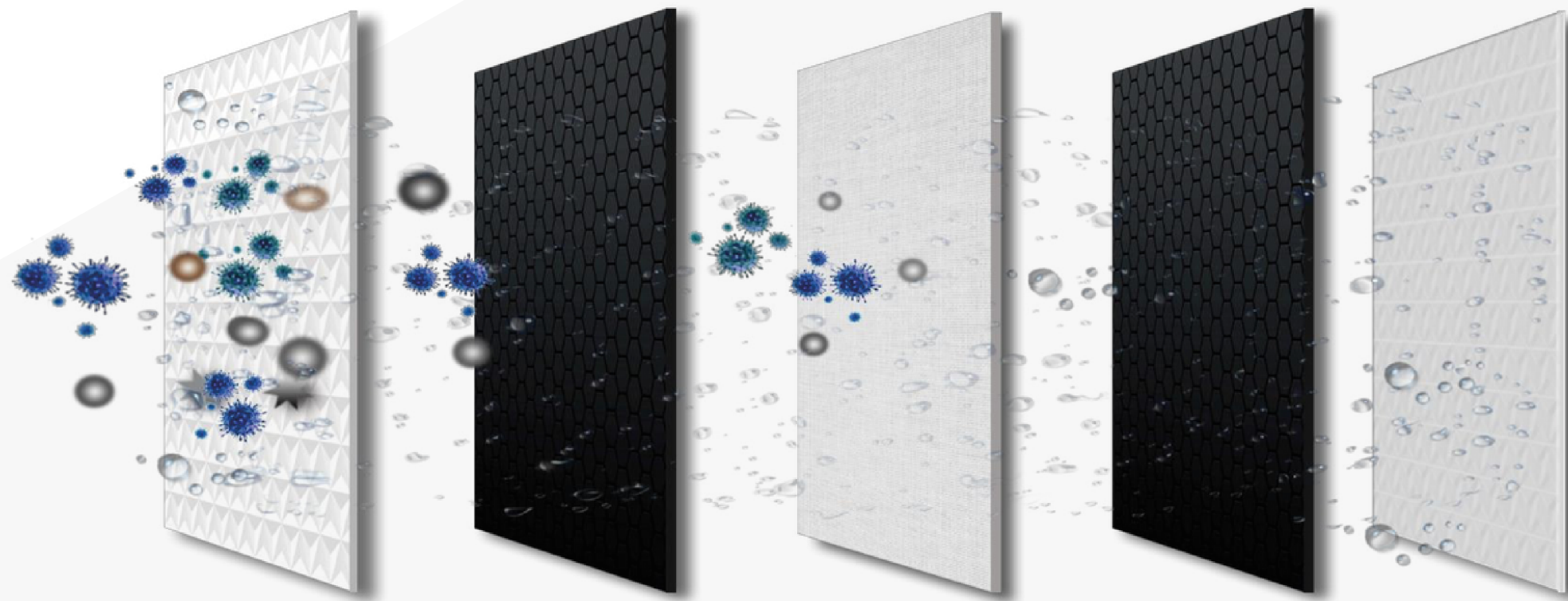


ULTRACOMPACT RO AND SUITABLE FOR ANY PLACE



4 filtration stages

It removes 99,9% of heavy metals, chlorine, bacteria, organic elements, etc.



PP



RO



CB



PET

Removes large particles, sediments, dust.

Removes heavy metals and bacteria.

Removes chlorine, odour and improves the taste.

Removes carbon particles

EASY AND FAST FILTER CHANGE

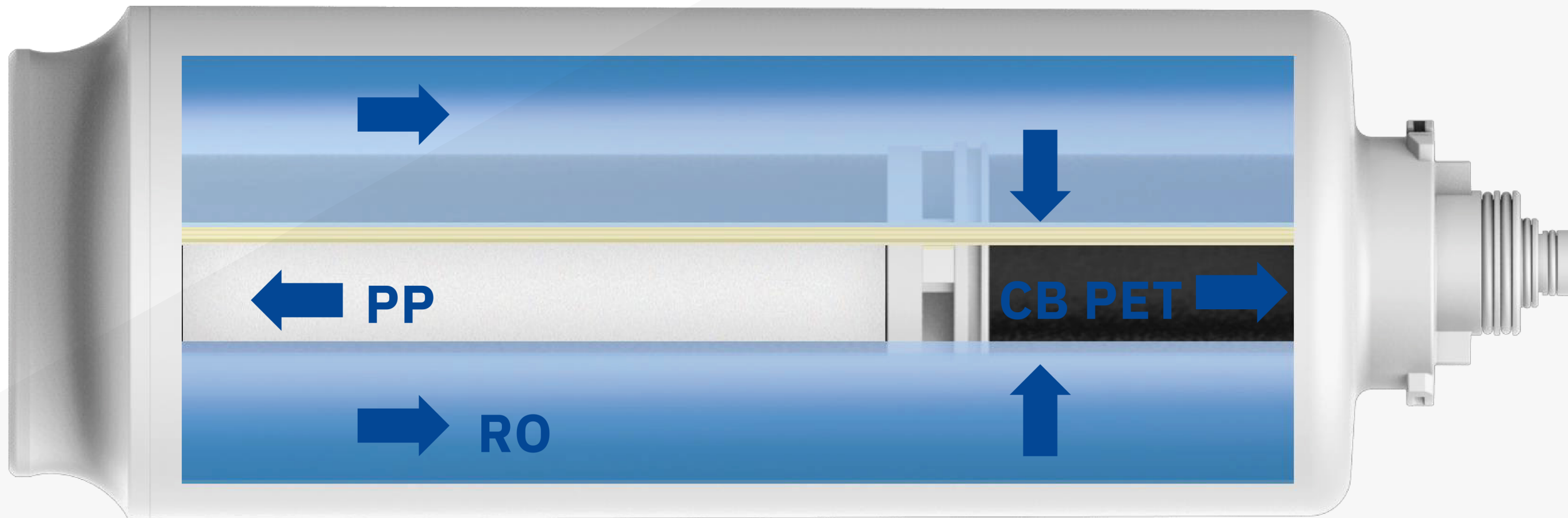
in only **3 seconds**

With an easy twist and without moving the machine from its position, take out the filter and replace it with the new one and your RO will work again at 100% capacity.



MEMBRANE MRO

Multifiltration capacity increases
the efficiency of the system.



PP → RO → CB → PET

FILTER CHANGE

3 times over **3** years

Get ready for
savings

- CF. Prefilter. Replacement recommended every 12 months.
- MRO: Replacement is recommended once every 36 months, depending on the water consumed, quality of the inlet water, etc.



SMART DISPLAY

Get ready for
savings



Functionality
system

Prefilter life span
indicator

Membrane life span
indicator

Quality of permeated
water indicator



100% RESPECTFUL TO THE ENVIRONMENT

2:1

2 Litres produced 1
Litres of waste water

Tankless equipment. This
guarantees you instant osmosis
directly from your tap. your tap.

 premier
Kineticco[®]
E x p o r t



SMART AUTOFLUSHING OF MEMBRANE

- Incorporate program
- Avoid blockage in the membrane and extend its life span
- It assures good water quality and better taste



SMART FAUCET

Check the quality of the filters quickly thanks to

multicolor led.

Service life of filters

- Litres remaining > 150 / Days remaining > 15
- Litres remaining ≤ 0 / Days remaining < 15



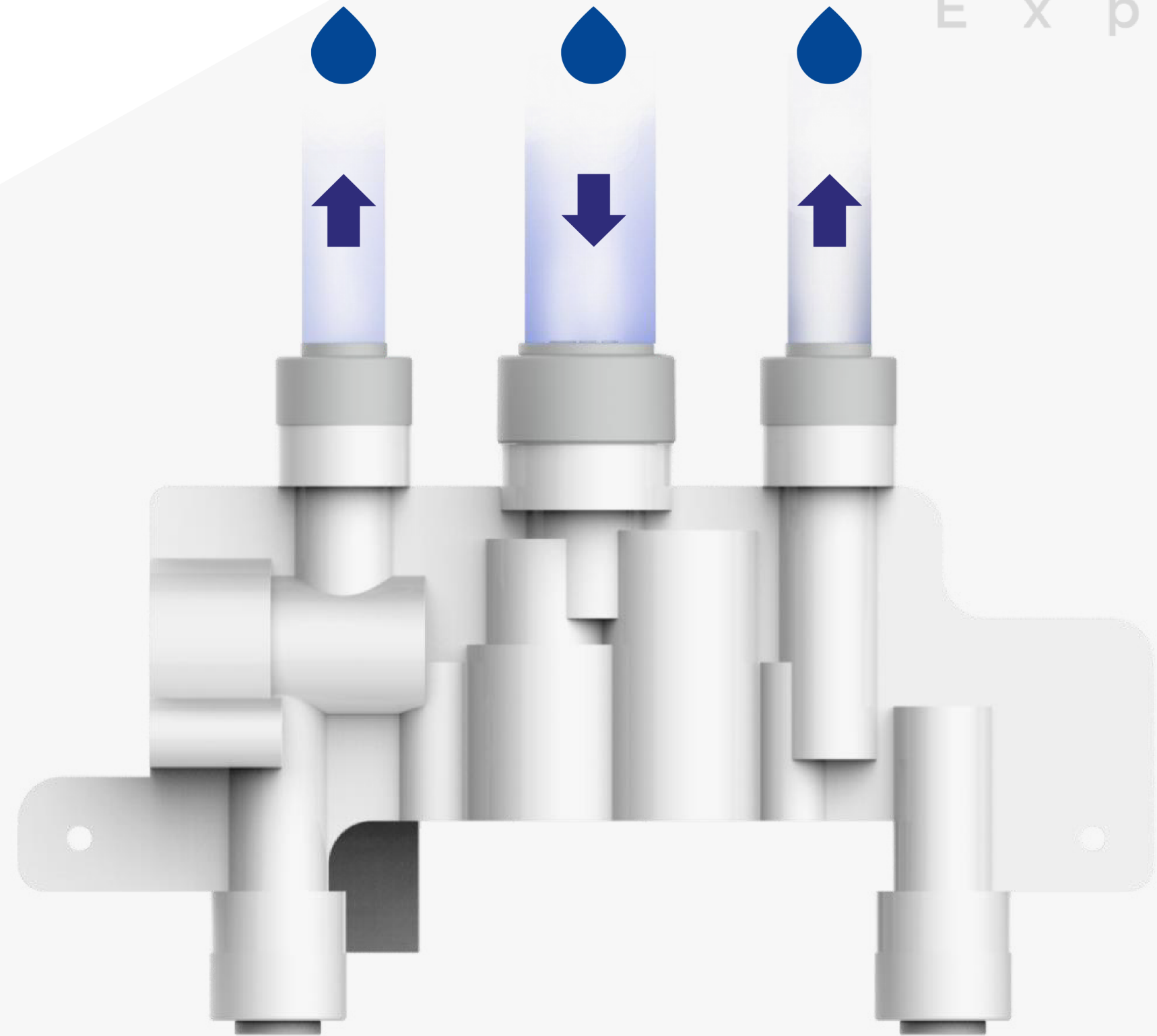
MANIFOLD



- ~ Less leaking
- ~ Less welding
- ~ Stronger seal
- ~ Easier and safer use



Kinetico®
E x p o r t



MULTI PROTECTION

Leakage protection

When the system detects a leakage of more than 3 seconds, the audible and visual warnings are activated.

Protection against low temperatures

Activated when the water temperature is below 3°C.

Protection against continuous stops and starts

Activated when the pump runs continuously for more than 30 minutes



TECHNICAL DATA SHEET

premier
RO



- Dimensions: 219 x 468 x 498 mm
- Temperature (max-min): 24 – 2 °C
- Resine volume 2 x 4,5 liters
- Work flow 1,5 m³/h
- Work maximum flow 2,2 m³/h
- Connections 3,4"
- Salt capacity 2 block for 4 kg
- Capacity 466 liters
- Power supply No
- By-pass Optional (901748)