



PuricomEurope®
REVERSE OSMOSIS PURE WATER

Sintra®
Reverse Osmosis



Water quality, quality of life, health, wellness for you and your family.
Sintra® offers the latest technology in home water treatment.

Sintra® certificates and control systems, guarantees the best performance and maximum quality.

Health
and wellness.









The adult human body is composed of 60% of water and baby of 80%.

Enjoy.

Drinking from our own spring water at home with our **Sintra**[®],
pure and balanced water for our senses.

Need.

Hydrate in an easy and comfortable way,
to offer a controlled and high quality water to our children.

Sintra[®], the best way to get pure water in our home.

The element.
Drinking water,
pleasure and need.

®

Sintra

Compact and
modern style.



Sintra® is the result of the study, design and manufacture of a large multidisciplinary team which have intervened biologists, engineers, designers, housewives and water treatment sellers.

We achieved a compact, modern, simple, easy to maintain and durable equipment. This is our philosophy when it comes to making something as important as a appliance.





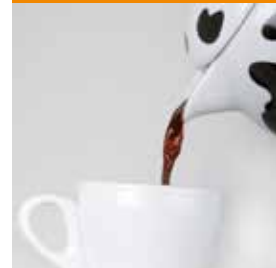
Cooking
food.



Water is very important in our kitchen. Cooking with pure water gives original taste to our dishes, being easier and faster cooking.

With **Sintra**[®], pastas, vegetables, etc., become delicious.

Infusions,
teas,
coffee...



Tap water incorporates chemicals together with increasing temperature up to 90° gives to our coffees; teas, cold drinks etc an unpleasant taste.

With **Sintra**[®] pure water, they are a pleasure to our senses.



Perfect
ice.



Cleaning and
brightness.



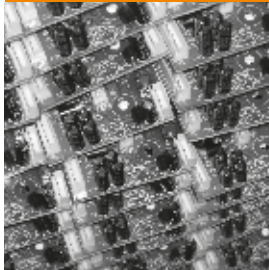
Light water, low mineral water, water ideal for our ice cubes, no flavors or limescale.

Sintra[®] has a special accessory to connect it to the ice cube makers of fridges/coolers

A good quality water and low mineralization in our house will help in cleaning vegetables and fruits and maintaining steam appliances.

Water to irrigate Ornamental plants must to be low mineralization as **Sintra**[®] provides.

**Sintra®
Technical
Specifications.**



Concentrations of salts and other substances reduced by your reverse osmosis membrane

The chemical composition and concentration of salts and other substances from water to equipment input affects osmosis purified water.

Sintra® TFC reverse osmosis membrane is capable of reducing the concentrations of elements and compounds listed in the following tables, among others.

Inorganics

Sodium	90 - 95%
Calcium	93 - 98%
Magnesium	93 - 98%
Aluminum	93 - 98%
Copper	93 - 98%
Nickel	93 - 98%
Zinc	93 - 98%
Barium	93 - 98%
Carbonates	93 - 98%
Chlorine	90 - 95%
Bicarbonates	90 - 95%
Nitrates	45 - 55%
Phosphates	93 - 98%
Fluorine	93 - 98%
Cyanide	90 - 95%
Sulfates	90 - 95%
Boron	40 - 45%
Arsenic	93 - 98%

Organics

Humic acids	98%
Glucose	98 - 99%
Acetone	70%
Isopropanol	90%
Ethylbenzene	71%
Ethylphenol	84%
Tetrachloroethylene	68 - 80%
Urea	70%
1,2,4 Trichlorobenzene	96%
1,1,1 Trichloroethane	98%

Technical Specifications

Dimensions (height x width x depth):

400 mm x 250 mm x 430 mm.

Weight: 14 Kg.

Feed temperature (max / min): 40°C / 2°C.

TDS feed (max): 2000 ppm.

Feed pressure (max / min):

2,5 / 1 bar (250-100 kPa).

Membrane: 1 X 75GPD.

Membrane production:

75GPD*. Softened water with 250 ppm. 25°C. 15% conversion.

Pressure against membrane 3,4 bar (without counter-pressure).

Pump: Booster.

Max. Accumulation

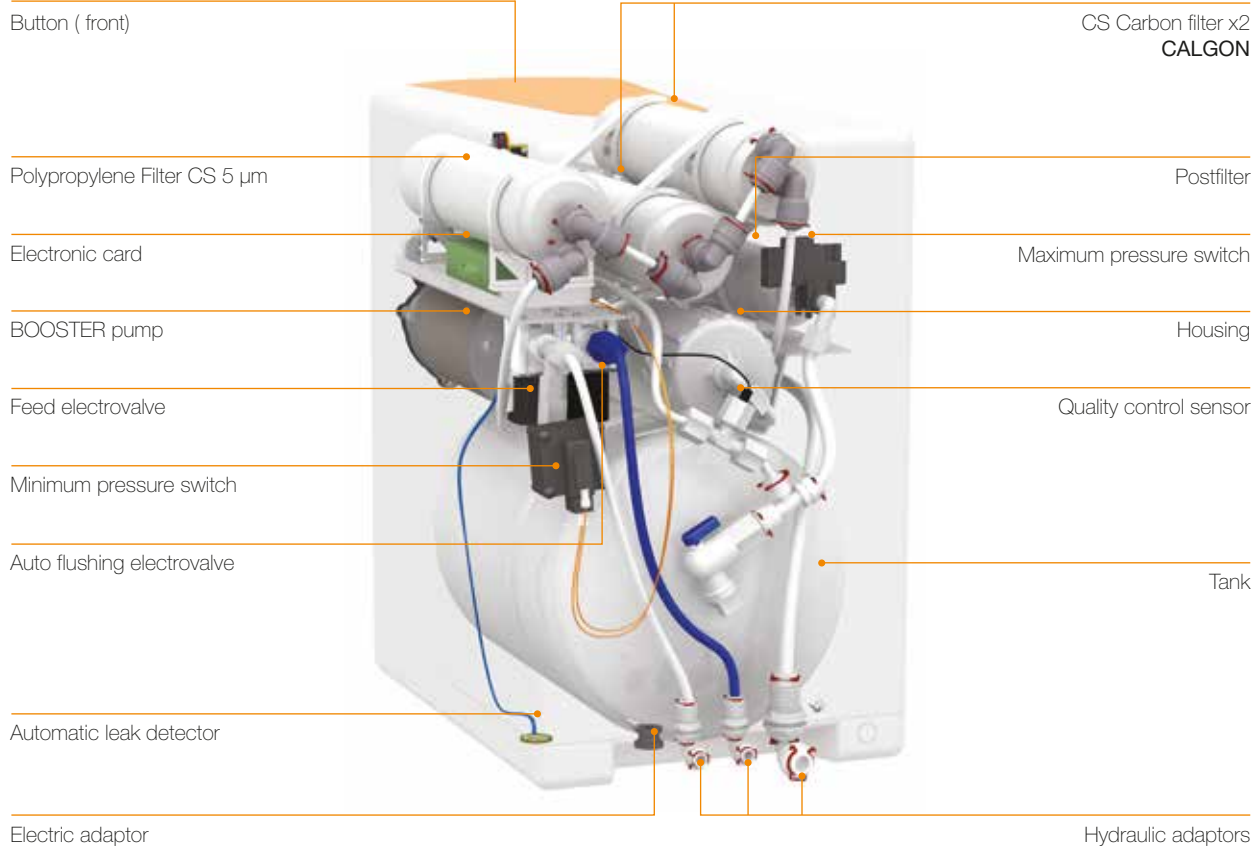
(pre-charged tank at 7 psi): 5,5 litres.

Electric current: 24Vdc. 1A.

Electric adaptor:

100-240Vac. 50/60Hz. 24Vdc 1,25A.

*Levels may vary some +/- 20%.



FCT
Automatic warning system for filter change.



Ecological
Control system for a reduced water consumption.



Aquastop
Automatic leak detector.



Quality Control
Water quality control.



Logical
Configuration according to the water quality.



Double flow
Easy and fast filling system.



CALGON carbon
The content of the filters is made by CALGON (USA). NSF-Quality certified.



Auto flushing
Automatic membrane washing.



Electrovalve
Electrovalve with safety filter.



PDA
Portable programmer.
Configurable feature and parameters.



Transformer
External transformer.



Direct access
Easy maintenance. Direct access.



Click
Safe binding and locking of connections.



Filmtec
High quality membrane DOW CHEMICAL.
NSF certified.



Silver
Gac silver carbon. NSF certified.



Green Filter CS
New top security filter and easy maintenance.



Insert
Safety system for tube connections.

