

# KINETICO PREMIER FAMILY

THE PERFECT ALLIANCE BETWEEN PERFORMANCE, RELIABILITY, SIZE AND PRECISION



premier  
COMPACT



The Kinetico Premier Compact water softener is one of the most compact, reliable and efficient on the market. Its electrically free double cylinder system gives it unmatched reliability and its size is ideal for the tightest of spaces. Perfectly adaptable to apartment or kitchen installations, it will surprise you with its performance.



Household of 2 or more people



Design compact



Salt in block



Display salt level



High flow

premier  
PLUS



The Kinetico Premier Plus softener allows ultra-precise water hardness adjustment, as well as considerable savings in salt and water consumption. Our latest technological innovations, combined with its salt capacity, its volumetric operation and its high efficiency allow it to meet the needs of a family with a high consumption of domestic water.



Household of 4 or more people



Design compact



New technology Accudial XP



Savings in water and salt



High flow

## TECHNICAL CHARACTERISTICS PREMIER COMPACT PREMIER PLUS

TECHNICAL CHARACTERISTICS	PREMIER COMPACT	PREMIER PLUS
Resin volume (liters)	2 x 4,5	2 x 11
Pressure (max-min)	6 - 1,8 bar	6 - 1,8 bar
Temperature (max-min)	24 - 2 °C	49 - 2 °C
Work flow	1,5 m³/h	1,8 m³/h
Peak working flow	2,2 m³/h	2,7 m³/h
Connections	3/4"	3/4"
Salt tank capacity	2 blocks of 4 kg	2 blocks of 4 kg
Electrical power supply	No	No
By-pass	Yes	Yes
Work system high-efficiency volume	Yes	Yes

# SOFT WATER INCREDIBLE BENEFITS



## Why soft water In your home?

### + COMFORT

Surfaces, shower screens and tiles bright, faucet without loss of flow, home appliances without lime.

### + WELLNESS

The softened water makes your skin be softer and you c silkier abello. What's more, you clothing it keeps as new.

### + SAVING

Save up to € 800 per year. Get up 30% energy saving. Protect your facilities from costly repairs in the future.

### + ECOLOGICAL

Reduces environmental impact using up to 4 times less detergents, cleaning products, anti-limescale, shampoos, conditioners ...

### Fine Mesh compact resin

The double bottle of Kinetico Premier descalers are made with Fine Mesh resins, which allows better retention of lime and low consumption of water and salt during regeneration.



Standard resin



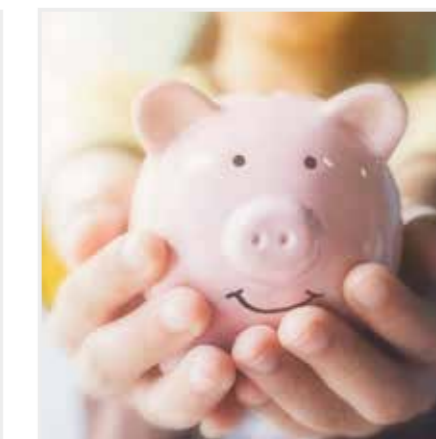
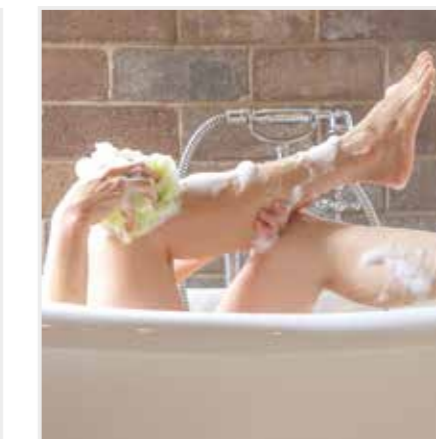
Fine Mesh Resin high performance

### Double bottle system Operation without electricity



# SOFTENERS WITHOUT ELECTRICITY

ULTRA-COMPACT  
ULTRA-EFFICIENT



Kinetico®  
water systems

CREATORS OF THE SOFTENER WITHOUT ELECTRICITY

# ¿Why choose Kinetico?

**50 AÑOS** 50 years of experience

During fifty years, Kinetico has designed innovative water treatment systems to meet all needs.

## Without electricity

The water softeners from Water Kinetico work without electricity. Their patented turbine allows them to operate without a plug to connect, a button to activate, a solenoid valve to adjust, or a clock to set. No electronics, no complex setups, no power consumption.

## Net national

A network of distributors present throughout the country, close to you, available, professionals, receptive and specialists in water treatment.

## Certificates

Our water treatment systems are the subject of numerous certifications and awards both nationally and internationally.



Creators of the descaler Without electricity

Inventors in 1970 of the first waterless water softener, we remain the world leader in fully hydraulic water treatment systems today. We develop increasingly innovative systems to meet the demands of our customers for reliability, design and high efficiency.

Water softeners **ULTRA-EFFICIENT** and a design **ULTRA-COMPACT**



**No electricity, no electronics.** The performance of our turbine Patented allows operation without electricity, no plug to connect, no button to activate, no solenoid valve to adjust, no clock to set. No electronics, no complex setups, no power consumption.



**Double bottle.** Provides softened water 24 hours a day, 7 days a week. During the regeneration of one bottle, the other is put into service automatically.



**High flow.** With an ultra-compact size, the design of our softeners allows a total adaptation to the characteristics of any home, even those that require very high flow rates.



**Regeneration countercurrent.** To difference from other softeners, the regeneration of the Kinetico equipment is carried out countercurrent to optimize the performance of the resin.



**Saving salt.** Our washing system with softened water allows a high performance of our equipment and a salt consumption reduced by half at the time of regeneration.



**Unquestionably compact.** Our softeners have been designed to combine maximum technology and performance with minimum space, thus finding its place even in the smallest spaces.

The last **TECHNOLOGIES, INNOVATIONS** patented



### New Accudial XP\* technology.

Our unique Accudial XP technology performs ultra-precise water hardness adjustment, meeting all needs and exceeding any level of water hardness.



### Emax technology.

Our emax technology combines unmatched efficiency and performance to prevent limescale in an optimal and long-lasting way.



### Quiet Drive technology.

Thanks to their precision valve, Kinetico softeners are among the quietest on the market. A minimum of hassle for a maximum of performance.

\* Only available for Premier Plus. Available in 2021 for the Premier Compact.

## IMPROVEMENT OF YOUR LIFE AND REMOVE LIME PERMANENTLY IN HOME!

FOR THE COMFORT, THE WELL-BEING, THE SAVINGS AND THE ECOLOGY, OF YOUR HOME AND YOUR FAMILY ...

### BEDROOMS



- Your daily and bed clothes, soft and silky like the first day.



- Relieve your problems dermatological thanks to softened water.



- Extends life of your little ones home appliances.

### FACILITIES



- Avoid accumulations of lime in pipes and appliances.



- Make your home an ecological place by reducing the use of chemical products, both for personal care and for cleaning.

### TOILETS



- Your taps and toilets, full of shine and like the first day.



- Forget about limescale on the sink and shower taps.



- The shower water pressure, always high and constant.

### KITCHENS



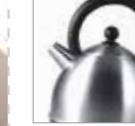
- Maintain a constant water flow at your kitchen tap.



- Save 25% energy increasing efficiency of your devices.



- Keep your toilets, surfaces and countertops clean and shiny.



- Optimize the cooking performance of your household appliances.

### DINING ROOMS



- Save up to € 400 a year on products from maintenance and cleaning.



- Protect your facilities and lime radiators and inlays.



- Your crockery and glassware, clean and shiny like the first day.

Installs in every corner of your home

Compact and efficient, softeners Kinetico meet all needs and find their place in all spaces, even the smallest ...



In the Kitchen...



In the laundry...



in the garage...